



# UNITED STATES CASE STUDY

STRIKETAPE INSTALLATION IN THE CENTRAL U.S.



# WIND FARM



West Texas wind farm with 37 GE 2.3-2.5 MW Turbines.

Total capacity of 90 MW.

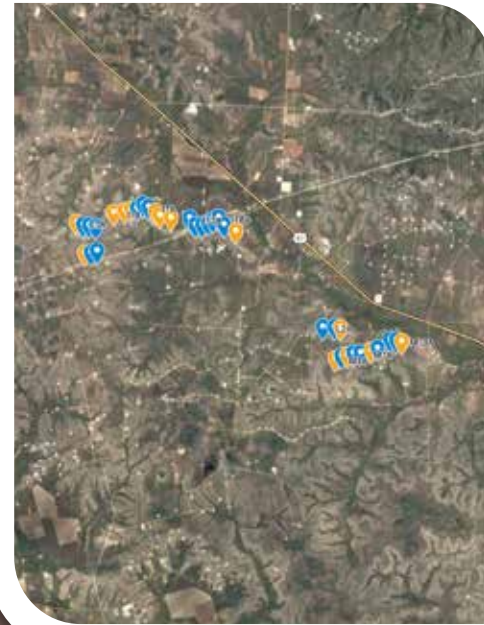
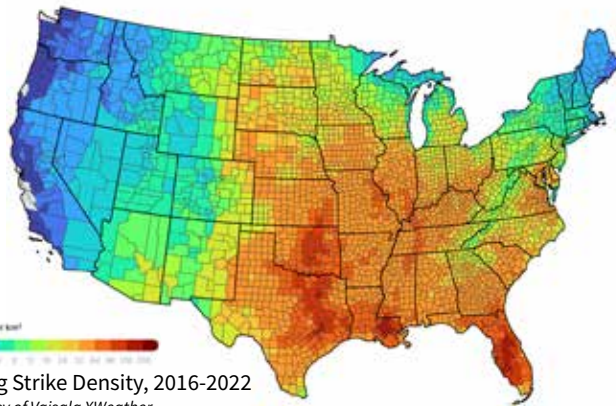
Client did a repower on the entire wind farm during 2022.

StrikeTape was installed during the repowering process.



# LIGHTNING ENVIRONMENT

This wind farm is located in a county that receives a statistical average of 40 lightning events per km<sup>2</sup> per year. The wind farm's 15 km<sup>2</sup> footprint means it receives roughly 600 lightning events yearly.



# STRIKETAPE UPGRADE



StrikeTape was installed on all blades.

Select turbines were monitored with eologix-Ping acoustic & lightning sensors.



Lightning follows the path created by the StrikeTape LPS on its way to the factory blade receptor, rather than burning and destroying the blade.

✓ StrikeTape & Blade remain intact.



# RESULTS



**50+**

Lightning strikes reported by eologix-Ping monitors and a leading lightning reporting service

**0**

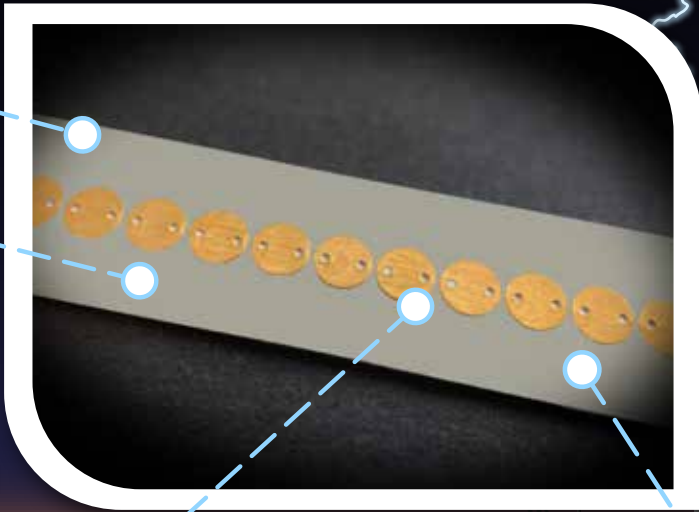
Blades damaged by lightning during the 16-month period following StrikeTape installation

# TECHNOLOGY

## STRIKE TAPE FEATURES

Only 1 mm thick

10 mm wide



Gold plated & reinforced

Aerospace-grade substrate



### 3-STEP INSTALLATION

No Special Tools

-  1. Clean
-  2. Peel & Stick
-  3. Seal
- Next Blade



# INSTALLATION



Many wind farms save time and money by installing StrikeTape during scheduled repowering.



**BUY NOW**



**1.413.217.1139**



**WEATHERGUARDWIND.COM**



**INFO@WGLIGHTNING.COM**

**STRIKE TAPE**

**WEATHER GUARD**  
LIGHTNING TECH

