



LIGHTNING DIVERTER SPECIFICATIONS



ISO 9001:2015 • AS9100D
CERTIFIED COMPANY



WWW.WEATHERGUARDWIND.COM

Call Us Today - 413.217.1139

Email us - info@wglighting.com

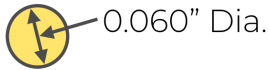
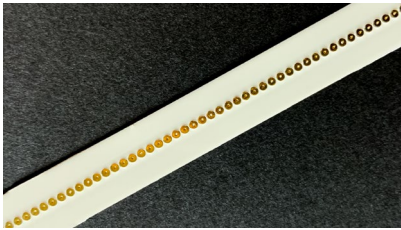


BUTTON & TERMINATION TYPES: TWO STYLES TO CHOOSE

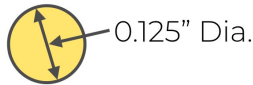
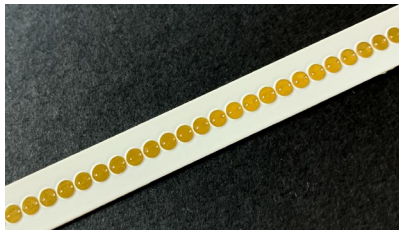
BUTTON TYPES

We offer two button types for wind turbine applications:

SMALL ROUND (SR)



LARGE ROUND (LR)



TERMINATION TYPE

For installation on a wind turbine blade, only an edge-cut termination is required in our installation process.

EDGE CUT (EDG)



WWW.WEATHERGUARDWIND.COM

Call Us Today - 413.217.1139

Email us - info@wglighting.com



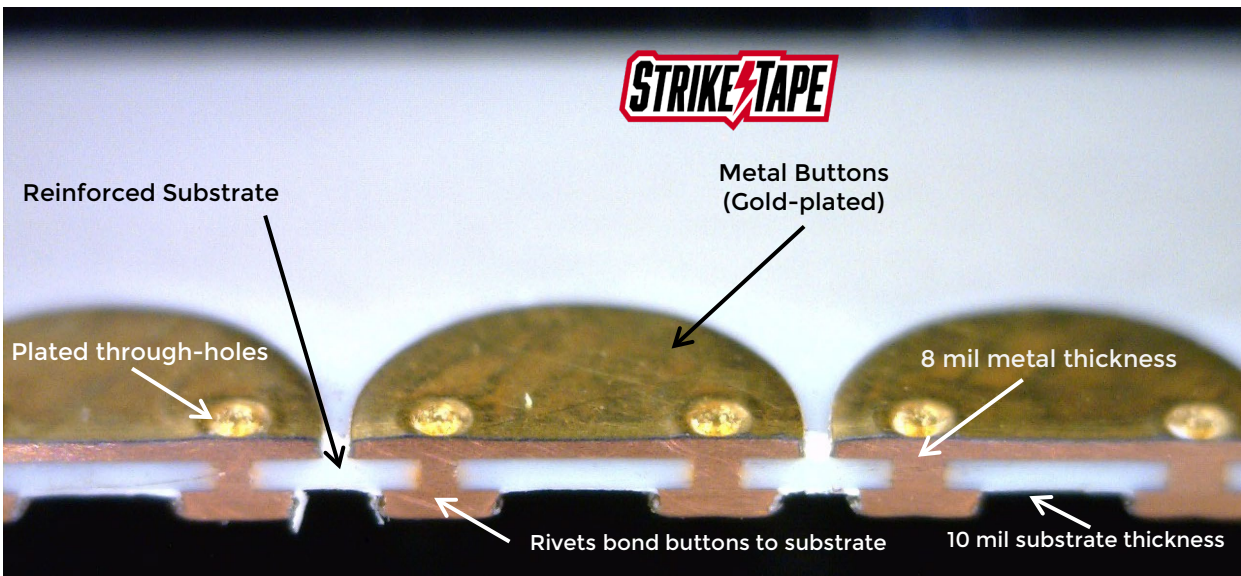
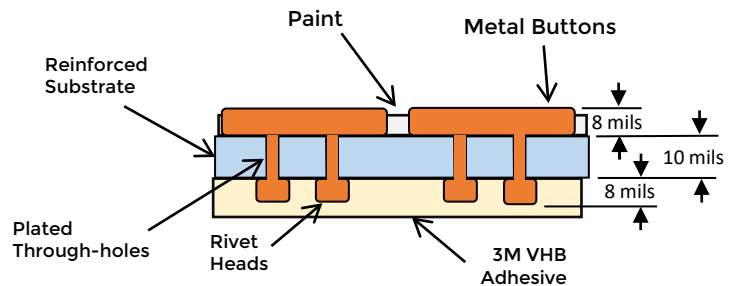
DIVERTER CROSS-SECTION AND FEATURES

Weather Guard Lightning Tech is a certified ISO9001:2015 & AS9100D company, adhering to the strictest quality assurance standards.

Diverter Features

- Substrate (strip) thickness: 10 mils
- Metal Button thickness: 8 mils
- Gold-plated metal buttons
- Rivets bond buttons to strip
- Factory-applied white paint
- 3M VHB adhesive backing (optional)

Cross Section of a **STRIKE TAPE** Diverter



WWW.WEATHERGUARDWIND.COM

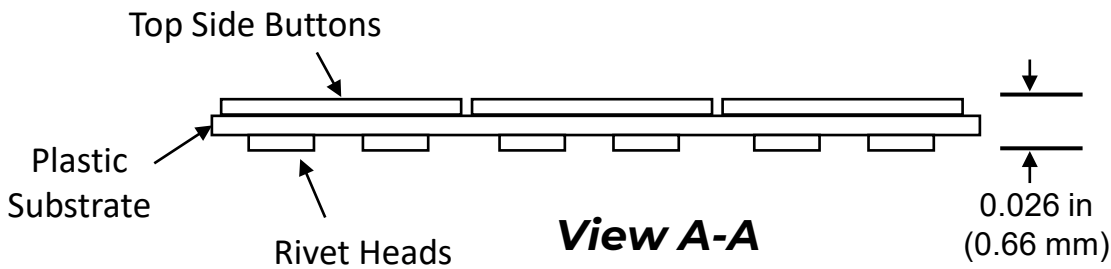
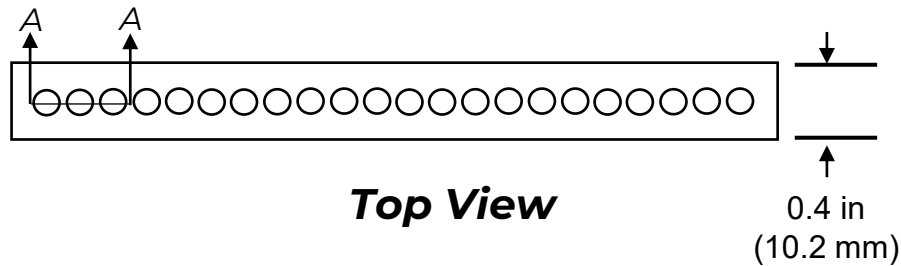
Call Us Today - 413.217.1139

Email us - info@wglighting.com



STRIKETAPE DIMENSIONS

TOP AND SIDE VIEW DRAWINGS



STRIKETAPE DIVERTER PART SPECIFICATIONS

Diverter Type	Substrate Width	Top Side Button Size	Button Thickness	Substrate Thickness	Overall Thickness	Diverter Weight
Large Round (LR)	0.40" (10mm)	0.125" (3.17mm) Dia.	0.008" (0.2mm)	0.010" (0.25mm)	0.026" (0.66mm)	0.13oz/ft (12.21g/m)
Small Round (SR)	0.40" (10mm)	0.060" (1.52mm) Dia.	0.008" (0.2mm)	0.010" (0.25mm)	0.026" (0.66mm)	0.12oz/ft (11.02g/m)
Oval (OV)	0.40" (10mm)	0.2"x0.6" (5.08x1.52mm)	0.008" (0.2mm)	0.010" (0.25mm)	0.026" (0.66mm)	0.12 oz/ft (11.02 g/m)



WWW.WEATHERGUARDWIND.COM

Call Us Today - 413.217.1139

Email us - info@wglighting.com

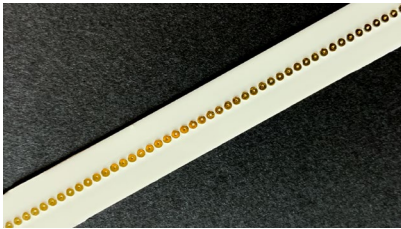


SPECIFICATIONS & PART NUMBERS

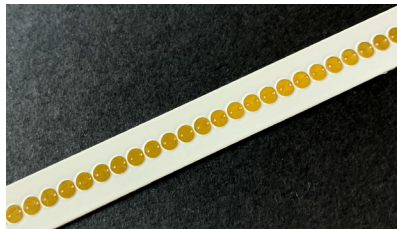
STRIKETAPE PART NUMBERS

Diverter Type	Part Code	Adhesive Tape	Button Style	Termination	Paint	Length* (inches)
Large Round (LR)	100-100620	1 = Yes 0 = No	LR	EDG, 10D, 14D	NC	Up to 450
Small Round (SR)	100-100620	1 = Yes 0 = No	SR	EDG, 10D, 14D	NC	Up to 450

SMALL ROUND (SR)



LARGE ROUND (LR)



PART # KEY: 100-100620-(Tape)-(Button)-(Termination)-(Color)-(Length).

Ex: 100-100620-0-SR-EDG-NC-450 = No adhesive tape, Small Round Button, Edge Cut termination, standard white paint, 45.0 inches

*Length is expressed in inches; final digit is a decimal.

Ex: 270 = 27.0 inches. Note: Full diverter strips are 45 inches; can be cut to custom lengths or butted together with EDG termination for longer than 45" strips.

ALL PARTS ARE TESTED TO AEROSPACE AND WIND ENERGY STANDARDS:

- RTCA/DO-160G Section 23
- SAE ARP5416A
- IEC 61400-24 LPL1



WWW.WEATHERGUARDWIND.COM

Call Us Today - 413.217.1139

Email us - info@wglighting.com

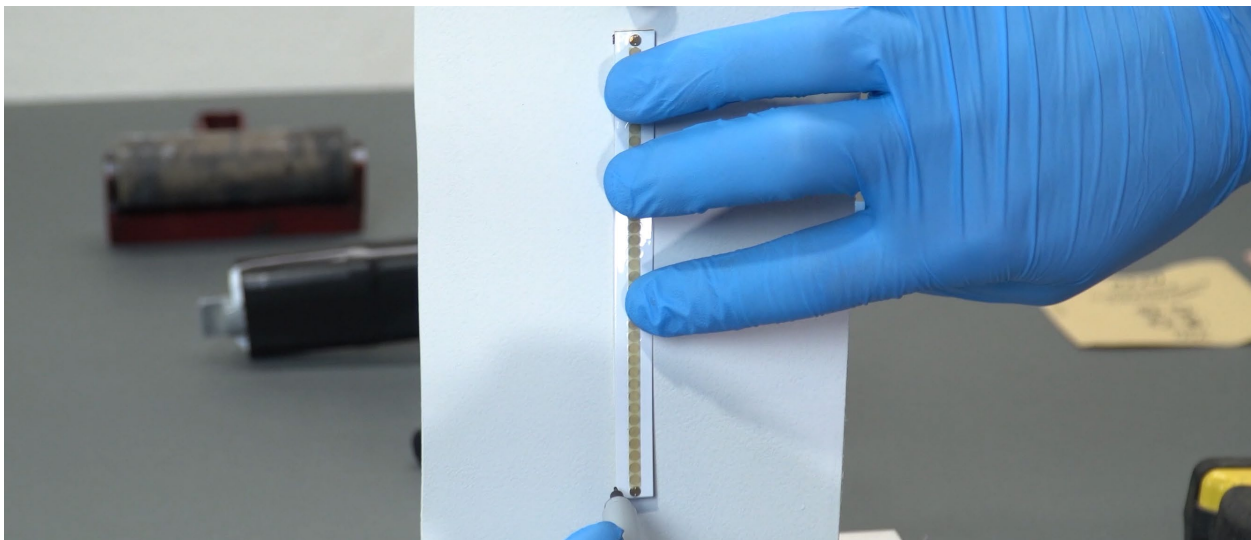


INSTALLATION PROCESS

Installation is an easy, 30-minute process that utilizes our peel-and-stick backing with proprietary epoxy edge sealants.

We provide:

1. Detailed PDF Installation guide with photos
2. Installation video available in six languages - English, Portuguese, Japanese, Spanish, French and German
3. Customer support throughout the process



WWW.WEATHERGUARDWIND.COM

Call Us Today - 413.217.1139

Email us - info@wglighting.com

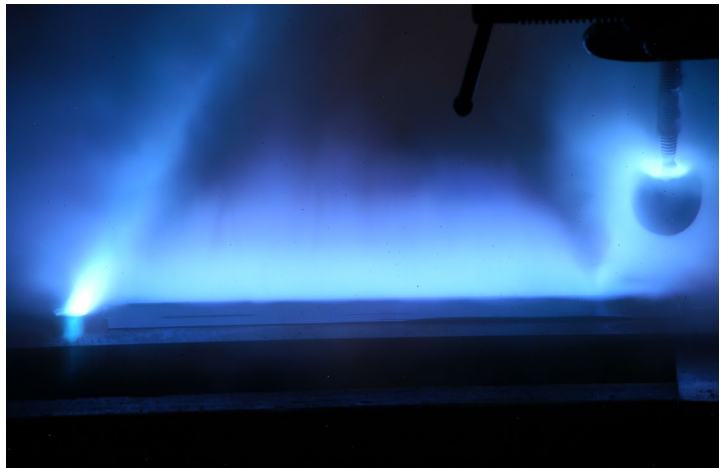
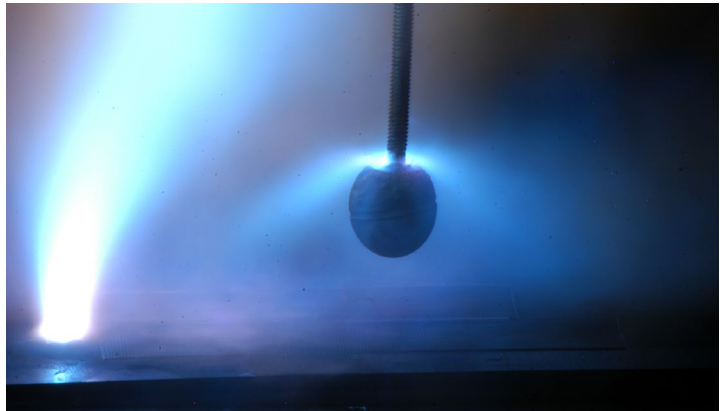


KEEPS PERFORMING AFTER REPEATED STRIKES

At Weather Guard Lightning Tech, we brutally test our lightning diverters to ensure they'll exceed the highest standards of quality and durability.

StrikeTape survived 16 strikes in lab testing--5x more than competitors.

Test Number	Peak Current (amps)	Specific Energy (MJ/ohm)
1	130,000	2.3
2	130,000	2.3
3	125,000	2.0
4	123,000	2.0
5	180,000	4.7
6	235,000	6.3
7	227,000	3.9
8	226,000	3.6
9	218,000	3.3
10	214,000	3.5
11	213,000	5.8
12	206,000	5.8
13	212,000	5.9
14	215,000	6.1
15	219,000	6.2
16	225,000	8.5



WWW.WEATHERGUARDWIND.COM

Call Us Today - 413.217.1139

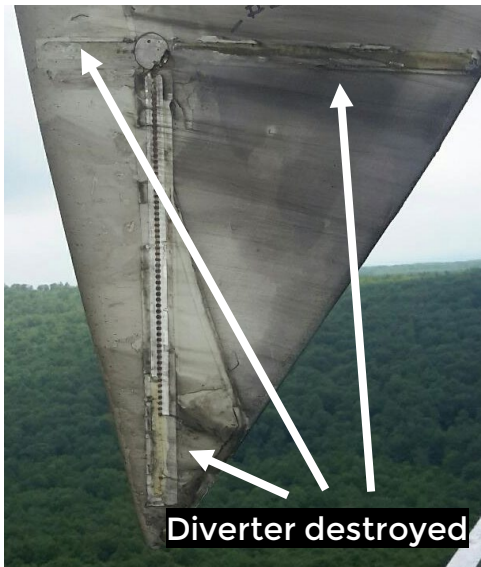
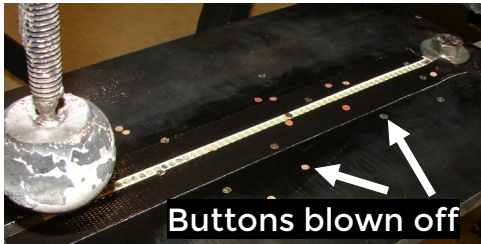
Email us - info@wglighting.com



COMPETING DIVERTERS FAIL & CAUSE DAMAGE

We tested our competitor's diverter in the lab—it fails quickly.

The results were the same in the field—just a few lightning strikes destroyed the diverter, causing major blade damage.



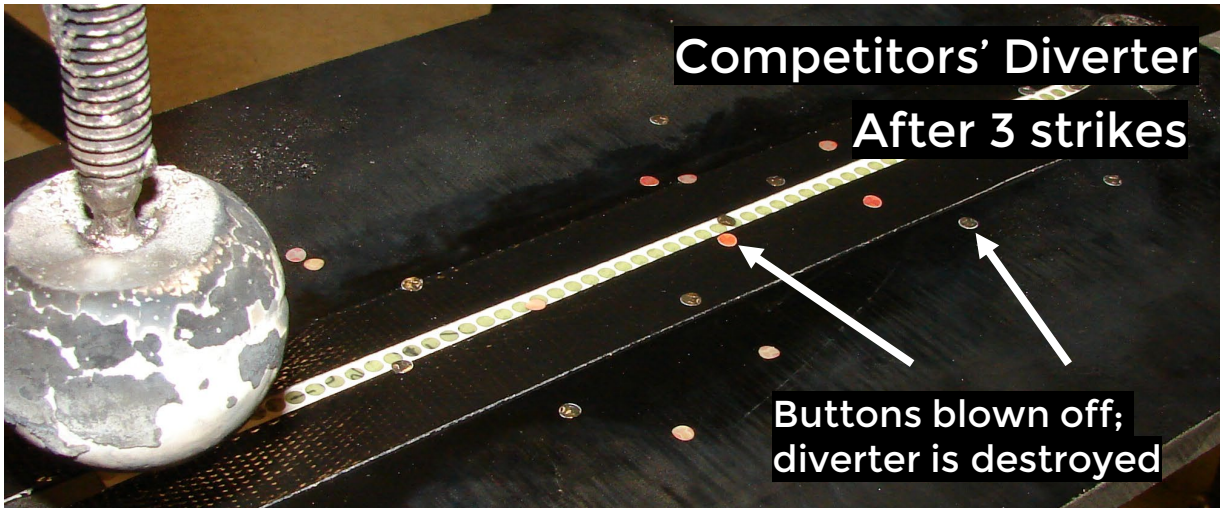
WWW.WEATHERGUARDWIND.COM

Call Us Today - 413.217.1139

Email us - info@wglighting.com



LAB STRIKES: A COMPARISON



WWW.WEATHERGUARDWIND.COM

Call Us Today - 413.217.1139

Email us - info@wglighting.com



EXTREME DURABILITY IN RAIN EROSION TESTS

A lightning diverter needs to be able to withstand extreme abrasion from rain, sleet and snow at 300km/h blade tip speeds.

The photo below shows our lightning diverters intact after being blasted by a 480km/h water jet for five minutes.



Our competitor

Standard diverter
erodes away in just 5 minutes

StrikeTape is intact,
still going strong



WWW.WEATHERGUARDWIND.COM

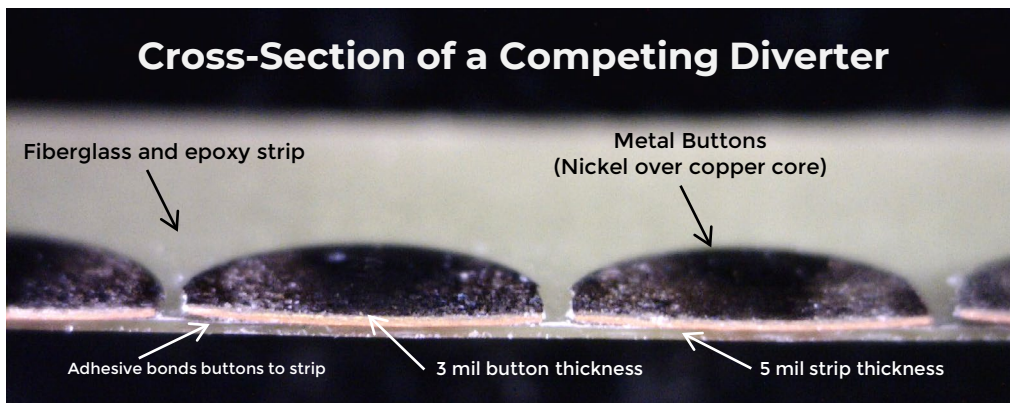
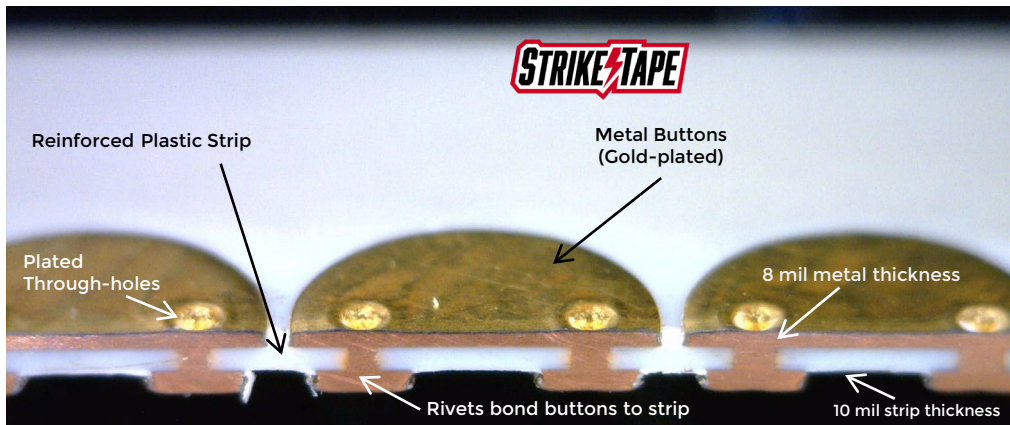
Call Us Today - 413.217.1139

Email us - info@wglightning.com



ADVANCED ENGINEERING QUALITY MANUFACTURING

Superior engineering, materials, and ISO quality assurance means the world's best lightning protection.



WWW.WEATHERGUARDWIND.COM

Call Us Today - 413.217.1139

Email us - info@wglighting.com



ADVANCED ENGINEERING ADVANCED FEATURES

With no standard specs in the wind industry, StrikeTape was designed by electrical engineers to set its own, unbeatable durability standard.

Feature		Competitor
Strip thickness	10 mils	5 mils
Copper metal core	<input checked="" type="checkbox"/>	<input checked="" type="checkbox"/>
No effect on blade aerodynamics	<input checked="" type="checkbox"/>	<input checked="" type="checkbox"/>
Button thickness	8 mils	5 mils
High-tech thermoplastic strip	<input checked="" type="checkbox"/>	<input type="checkbox"/>
Gold plated for conductivity	<input checked="" type="checkbox"/>	<input type="checkbox"/>
Through-fastened with rivets	<input checked="" type="checkbox"/>	<input type="checkbox"/>
3M VHB sticky-back tape	<input checked="" type="checkbox"/>	<input checked="" type="checkbox"/>
Lasts 16 strikes in lab tests	<input checked="" type="checkbox"/>	<input type="checkbox"/>



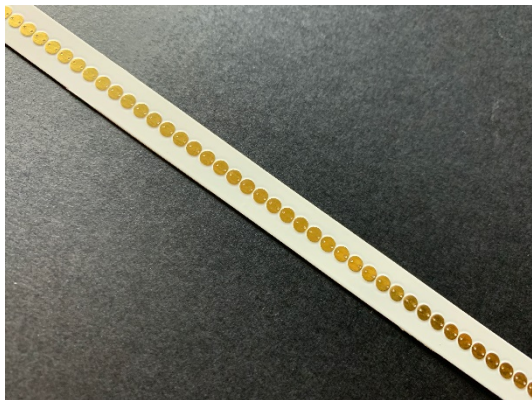
WWW.WEATHERGUARDWIND.COM
Call Us Today - 413.217.1139
Email us - info@wglighting.com

A HISTORY OF PROTECTION **WEATHER GUARD LIGHTNING TECH**



ABOUT THE COMPANY

- CEO Allen Hall is an FAA Designated Engineering Representative (DER) for Lightning Direct Effects
- In 2006, Weather Guard Lightning Tech was incorporated.
- StrikeTape lightning diverters were developed in 2011 and are in use all over the world.
- In 2020, Weather Guard Lightning Tech earned AS9100D & ISO9001:2015 quality certification.
- Weather Guard Lightning Tech is the Original Equipment Manufacturer of StrikeTape.
- Give our customer service team a call today!



**ISO 9001:2015 • AS9100D
CERTIFIED COMPANY**



WWW.WEATHERGUARDWIND.COM

Call Us Today - 413.217.1139

Email us - info@wglighting.com



We Make Lightning Protection Easy

Contact Us Today

General Inquiries

 [413.217.1139](tel:413.217.1139)

 info@wglighting.com

Engineering

 [413.217.1176](tel:413.217.1176)

 allen.hall@wglighting.com

Accounting

 [413.217.1178](tel:413.217.1178)

 valerie.hall@wglighting.com

Customer Service

 [413.217.1178](tel:413.217.1178)

 dan.blewett@wglighting.com



ISO 9001:2015 • AS9100D
CERTIFIED COMPANY

 **PRI Registrar**
PERFORMANCE REVIEW INSTITUTE